

Exclusive Invitation



Business Leaders Masterclass

Inspiring Future Talent

5pm–6.30pm (SYD)/ 3pm-4.30pm (KL)/ 2pm-3.30pm (JAK)
Tuesday 31 August 2021



Australia-ASEAN
Business Council

A frank and fascinating conversation with entrepreneur and business leaders on their career journey and lessons for success in the new normal



HOST

Adjunct Professor Eleanor Mak

President, Australian-ASEAN Business Council
CEO & Co-Founder, Guru Advantage

SPEAKERS



Natasha Zulkifli
(Malaysia)

Director
YTL Constructions
Founder Director
Women in Rail Malaysia



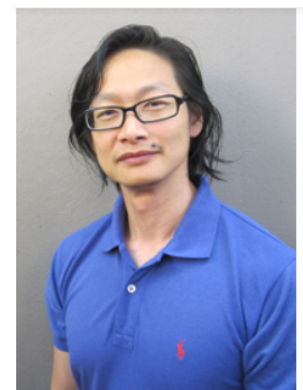
Muliandy Nasution
(Indonesia)

Founder &
Managing Partner
Fath Kapital
Private Equity Investor



Natalia Kopytina
(Australia)

Head Cross-Border
Business Development
King & Wood Mallesons



Dr Cedric Chu MBBS FRACGP
(Australia)

Developer
Functional Spectrum
of Intelligence System
Owner
Newmarket Family Doctors



Business Leaders Masterclass – Inspiring Future Talent

BIOS

Adjunct Professor Eleanor Mak

President, Australia-ASEAN Business Council; CEO & Co-Founder, Guru Advantage

Eleanor is a strong advocate for deeper engagement between Australia and ASEAN and instrumental in the Australia-ASEAN Business Council implementing a number of 'Australia-ASEAN first' initiatives with key partners. She has held leadership roles in commercial/corporate law, professional consulting and policy reform across the region. Eleanor has helped Australian and ASEAN governments to design and implement good regulatory practice frameworks, led economic diplomacy capability training and worked with international companies on successful market entry and expansion strategies.

Eleanor launched Guru Advantage – an edutech startup providing global professional immersion programs which accelerate global careers. An Adjunct Professor at the Institute of Malaysian and International Studies, National University of Malaysia, Eleanor is also the Australian Executive Chair of the RCEP Industry Cooperation Committee.

Natasha Zulkifli

Director, YTL Constructions; Founder Director, Women in Rail Malaysia

Natasha is a Director at YTL Construction and has worked in the Malaysian rail space for 10 years. Natasha is also Founder Director of Women in Rail Malaysia, a not-for-profit entity supporting and promoting equality and diversity within the Malaysian rail industry. She is passionate about driving Women in Rail Malaysia for the benefit of women not just currently working within the industry but to also promote the Malaysian rail space as a career of choice to young women currently studying in secondary school and in universities.

In 2019 the German government recognized Natasha as a one of the 'Remarkable Women In Transport', officially recognizing her as a female change-maker and highlighting her contribution to sustainable mobility solutions.

Muliandy Nasution

Founder & Managing Partner, Fath Kapital; Private Equity Investor

Muliandy is the Founder and Managing Partner of Fath Capital, a private equity firm. A digital corporate transformation leader and industrial expert who escalates enterprise to the highest level, Muliandy specialises in New Market Entry Investment.

Muliandy has strong experience and exposure on extensive digital and corporate transformation and has managed multi-cultural teams to develop emerging market opportunities across Asia Pacific, especially South Asia and South East Asia Region. Muliandy has helped over 20 companies in his portfolio of private equity investments.

Natasha Kopytina

Head Cross-Border Business Development, King & Wood Mallesons

Natalia Kopytina is Head of Cross-Border Business Development at King & Wood Mallesons – a leading international law firm headquartered in Asia. With almost 20 years in professional services marketing and business development, Natalia has had a varied career spanning various roles and responsibilities.

Passionate about cross-border collaboration, and creating deeper people-to-people connections, in her current role, Natalia plays a key role in the ongoing design, review and implementation of KWM's ASEAN and international strategy.

Dr Cedric Chu MBBS FRACGP

Developer, Functional Spectrum of Intelligence System; Owner & Founder, Newmarket Family Doctors

Dr Cedric Chu is a General Practitioner medical doctor and business owner of Newmarket Family Doctors. He has 27 years of experience in General Medicine and has established 2 medical practices. Cedric particularly enjoys being an analytical problem solver for almost any problem to do with people and people solutions.

He has a strong interest in using evolutionary psychology for personal and business development and is developing a new system of understanding psychology called the Functional Spectrum of Intelligence System - aimed at personal development and leadership skills for high functioning people. Cedric has travelled to 70 countries, is a proficient martial artist, an artist and travel blogger. He has also taught medical students for 25 years, speaks publicly on many medical and psychological topics and is passionate about education.